

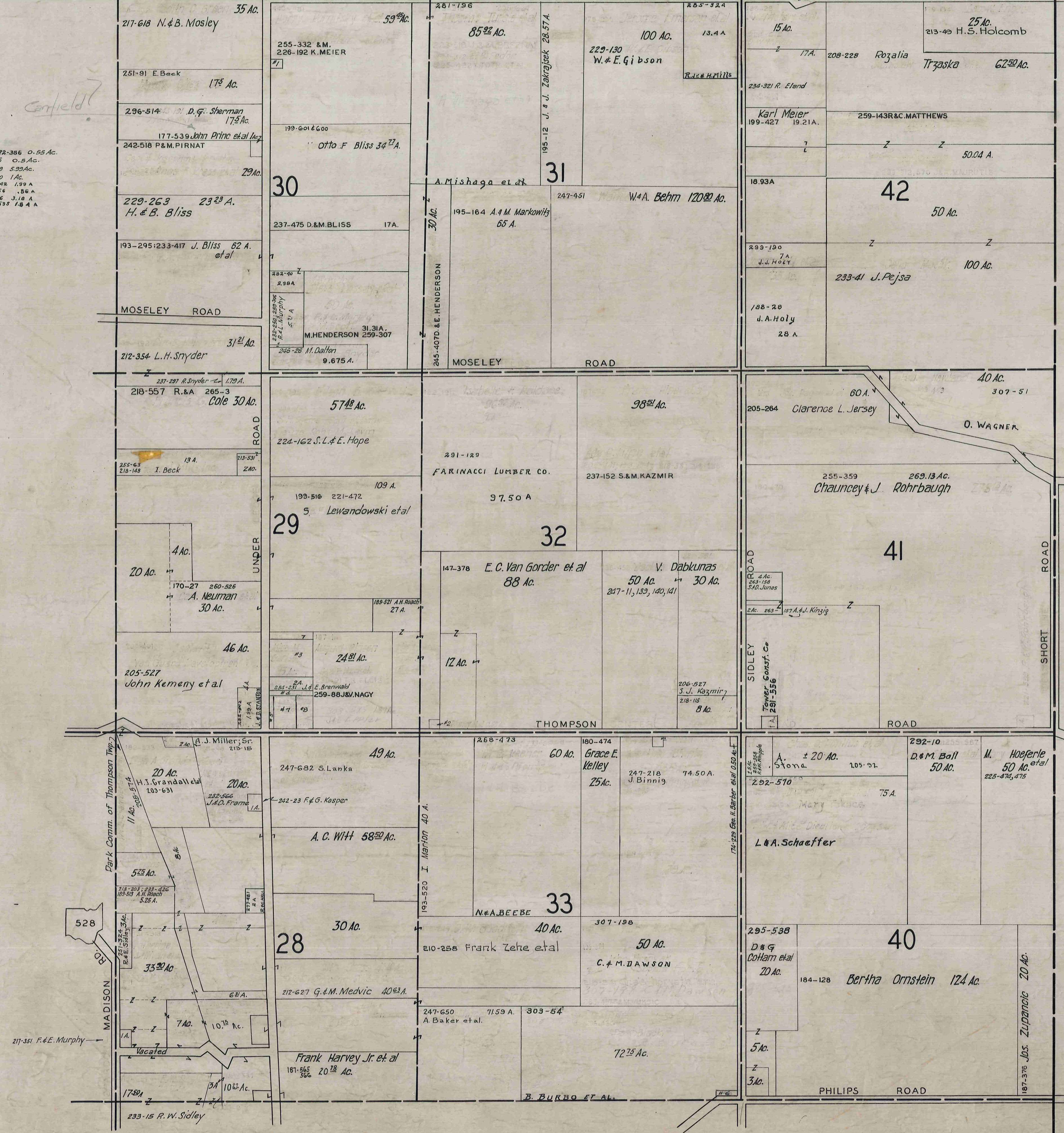
NORTH-EAST QUARTER

THOMPSON TP.

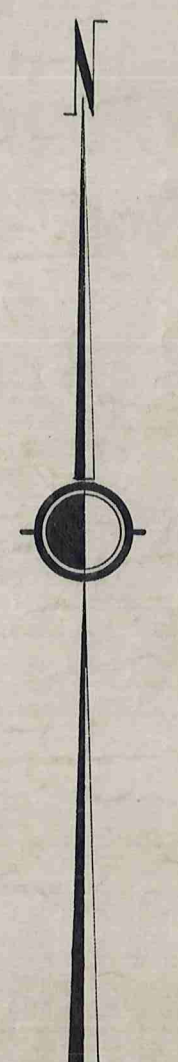
NORTH-EAST QUARTER

L A K E STOCKING C ROAD O U I N T Y

- #1. O.L. 30 TOWER CONST CO. 272-386 0.55 Ac.
- #2. O.L. 32 C.F.V. Baker 283-86 0.5 Ac.
- #3. O.L. 29 E. Powers et al 265-989 5.39 Ac.
- #4. O.L. 28 J.C. Berglund 263-220 1 Ac.
- #5. O.L. 14 D. STANTON 288-292 1.99 A
- #6. O.L. 33 J.F.I. BURBA 301-56 .86 A
- #7. O.L. 23 L.V.F. SMITH 232-6 3.18 A
- #8. O.L. 33 J.F.E. SPLEER 303-535 1.8 A



A S S H T A B U L A C O U N T Y



SCALE 1 in. = 10 ch.

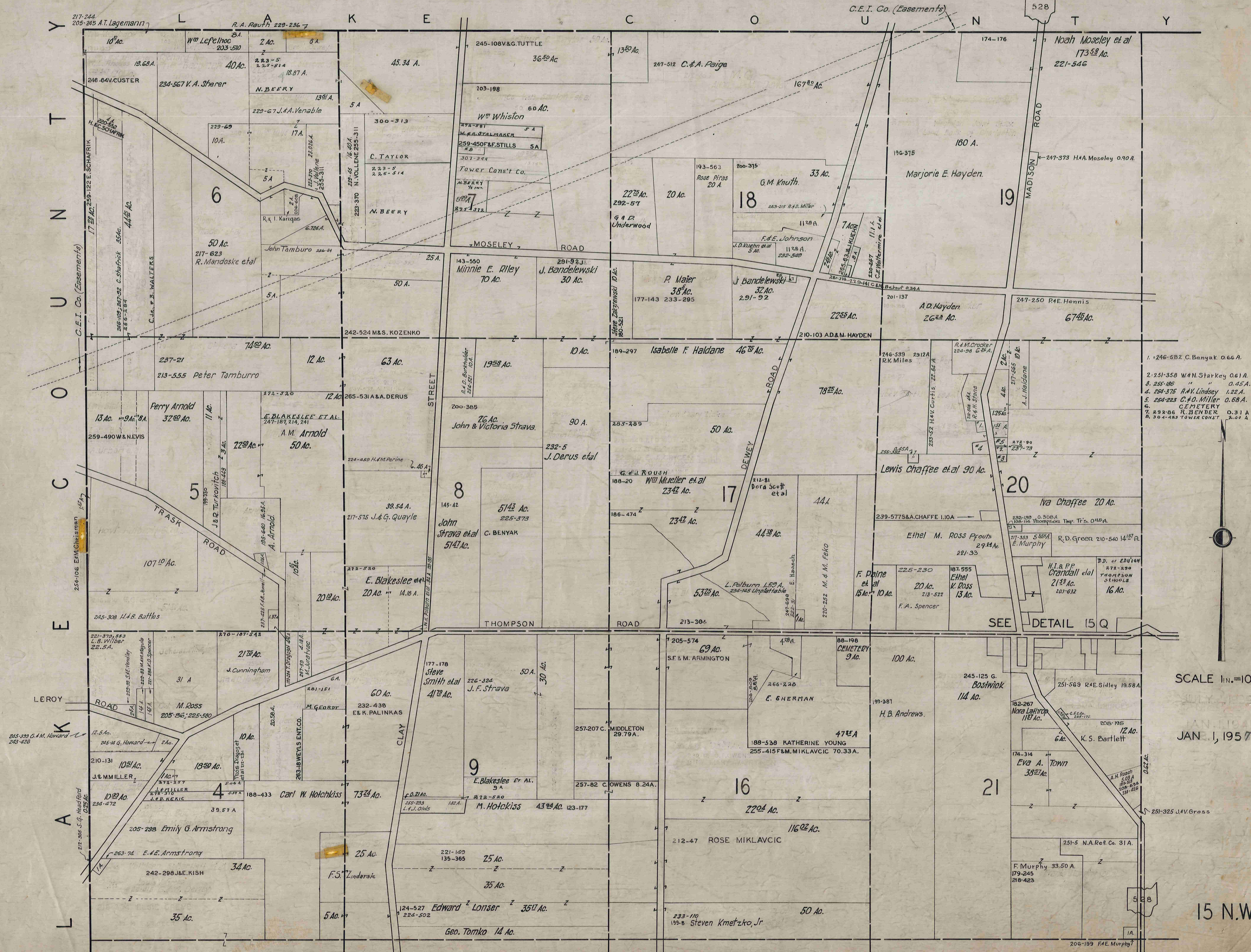
JULY 1 1933
JAN 1, 1957

15 N.E.

NORTH-WEST QUARTER

T H O M P S O N T P.

NORTH-WEST QUARTER



SCALE 1 in. = 10 CH.

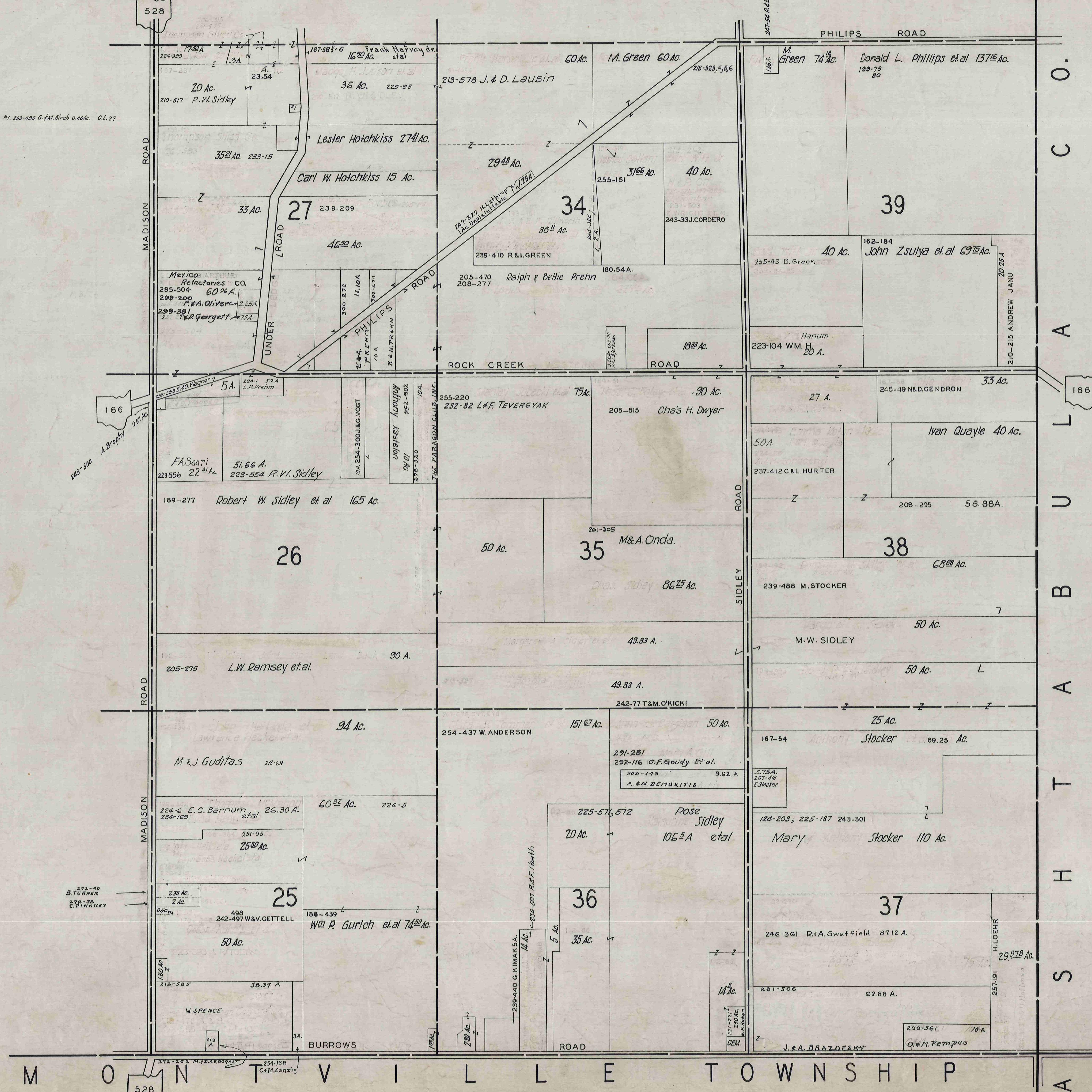
JAN 1, 1957

15 N.W.

SOUTH-EAST QUARTER

THOMPSON TP.

SOUTH-EAST QUARTER



C
O
A
L
U
B
A
T
H
S

SCALE 1 in. = 10 ch.
JULY 1, 1939
JAN 1, 1957

15 S.E.

M O N T V I L L E T O W N S H I P

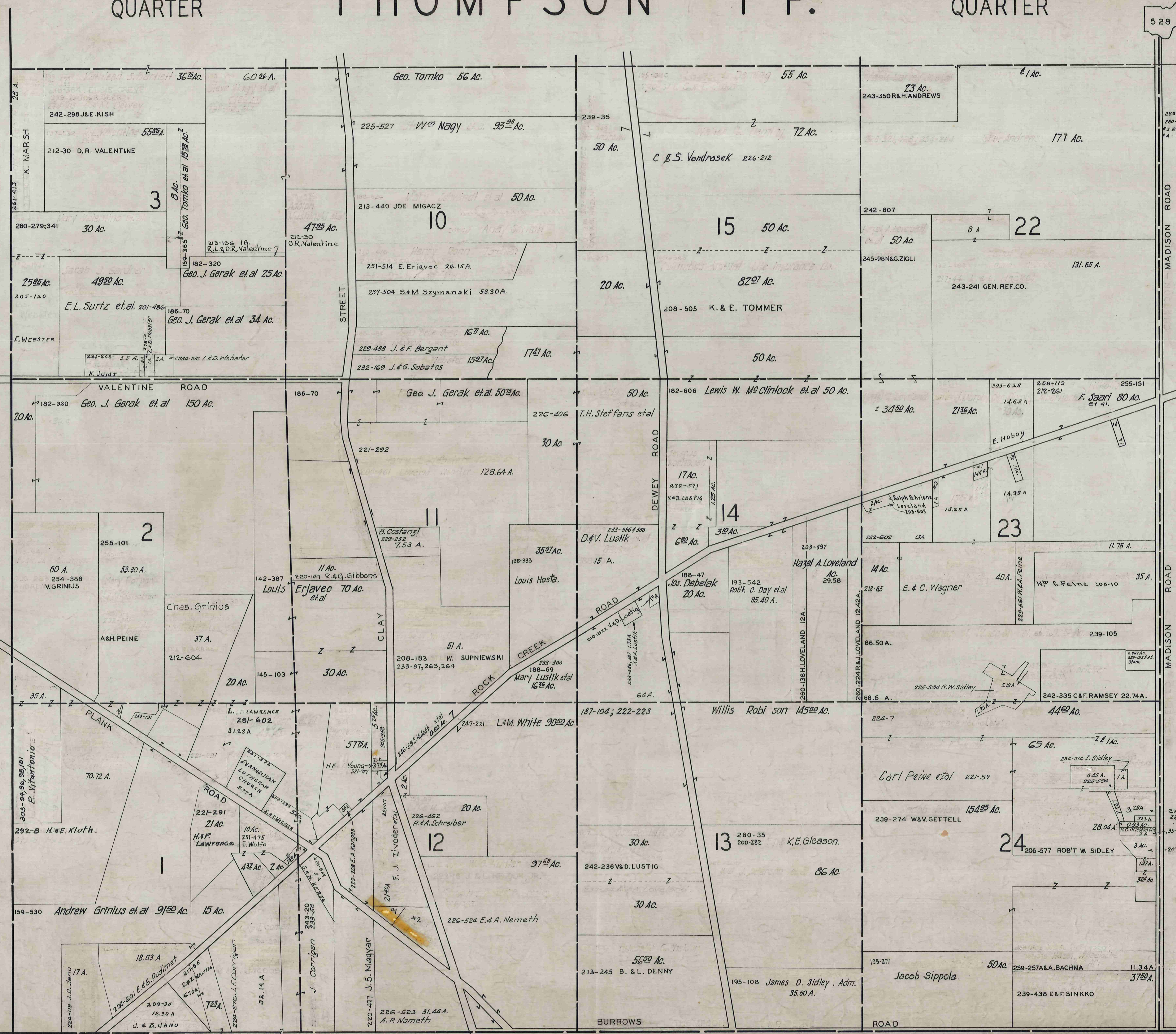
528

166

166

528

Y
T
N
U
C
O
E
A
L



528

166

86

528

D.L. NO. 23
 266-261 E.C. WAGNER
 260-278 S.G. MASCORE/16
 23 R. & M. WILLIAMS 266-363
 14 - W. & B. POLBURN 266-100

#1 251-326 T.M. Susman 1.74 A.
 #2 257-153 A.P. NELLIS 9.07 A.

SCALE 1in.=10CH.

JAN 1, 1957